

Creative Workshop for **Live to your Living Room**  
Summer Team Away Day 2025  
Facilitator: Devlin Shea



A black and white microscopic image of plant tissue, showing various cellular structures and patterns, serving as a background for the title.

# Workshop Goals

This workshop provided a format for the group to work together to create a shared vision of what Live to your Living Room (LTYLR), as an organisation, represents. It is also a space to explore how the organisation wants people to feel when they attend one of their events.

The team is quite broad, with each person working on their own area, so this is an opportunity to create a vision that everyone can take ownership of and understand how they contribute in their own way.

First the team members shared images that represent how they felt about LTYLR and their place within it, and the experience that they want people to have when coming to a LTYLR event. A summary of themes that came out of these images are on the next slide.



# Summary of themes

- **Connection & Belonging:**

Emphasis on building connections between team members, performers and audiences, fostering a sense of belonging and supportive community.

- **Warmth, Comfort & Safety:**

Frequent references to feelings of warmth, coziness and safety—through gestures like hugs, the comfort of home and a nurturing environment.

- **Accessibility & Inclusion:**

Commitment to making music and events accessible to all, regardless of ability or circumstance and providing opportunities for those who might otherwise be excluded.

- **Transformation & Joy:**

Focus on the transformative power of the experience, unleashing joy, rediscovering excitement and positive personal change.

- **Support & Uplift:**

Highlighting the importance of supporting and uplifting one another, providing encouragement and creating a valued, held environment.

- **Shared Experience & Collaboration:**

Central idea of building something together, sharing experiences and collaborating as a team to create a shared vision and mission.

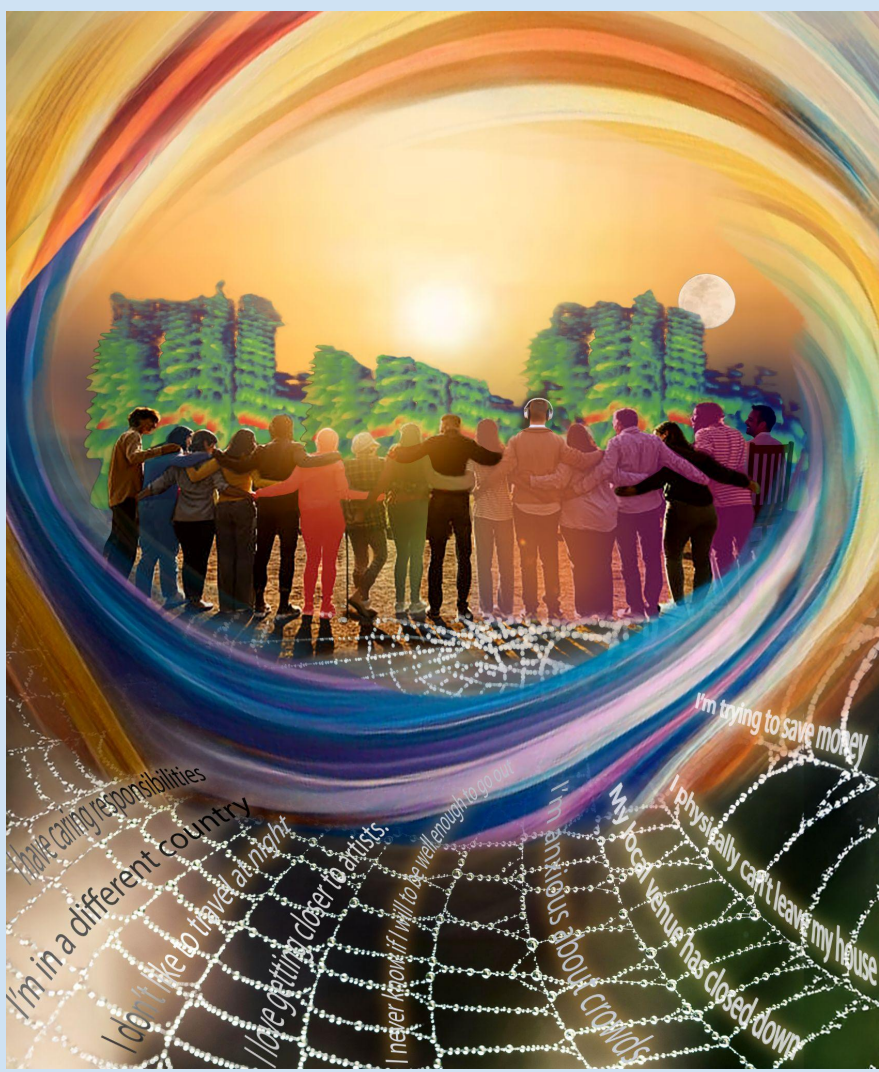


# Visual Story

**The Visual Story is an image co-created with the team.**

**The image represents LTYLR's Vision and Mission as well as being a summary of important themes, thoughts, feelings and beliefs which came up in the workshop discussion.**

# LTYLR's Vision & Mission



## Visual Story: LTYLR's Shared Vision - A warm, welcoming, together connection. Fair and Shared.

Our image represents warmth (*colours, sun*), a sense of belonging (*group hug*), and a feeling of excitement and anticipation (*soundwaves*).

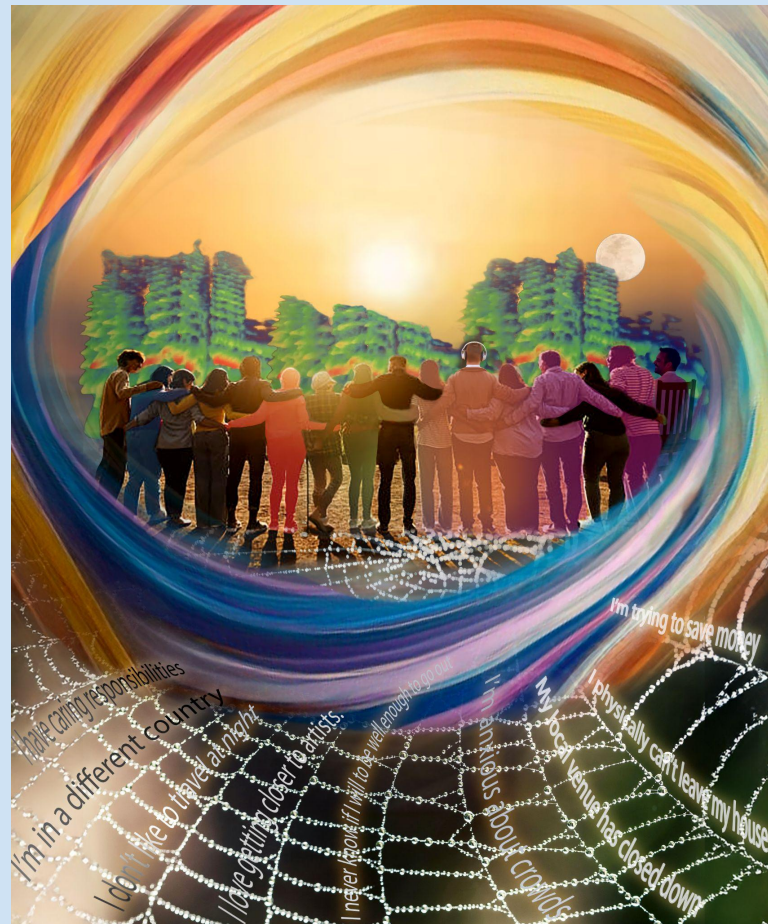
There is a **sense of awe** – the audience is amazed that this is available to them and we – the team – are equally struck by wonder that it all works and exists.

The image is about a shared experience; it is not just an audience focused on a performer. It's a gathering. **It's a warm, welcoming connection – a coming together of different threads, experiences and pathways that lead to this place of community.**

The **cobweb** stands for the complex routes that have brought this audience together. These paths lead to the **group embrace in the central image**. The group is the audience, made up of autonomous individuals who form a welcoming community.

Visually, there is a **circular, colourful light** that hugs the audience. There is joy and love in the colours. They're also supported by the **soundwave** – the voices of all of us, the team members, speaking. Layers of embrace and support flow into the image from the web and radiate out from the centre.

It's a bit like a family – supportive and embracing – offering togetherness and comfort, as well as autonomy.

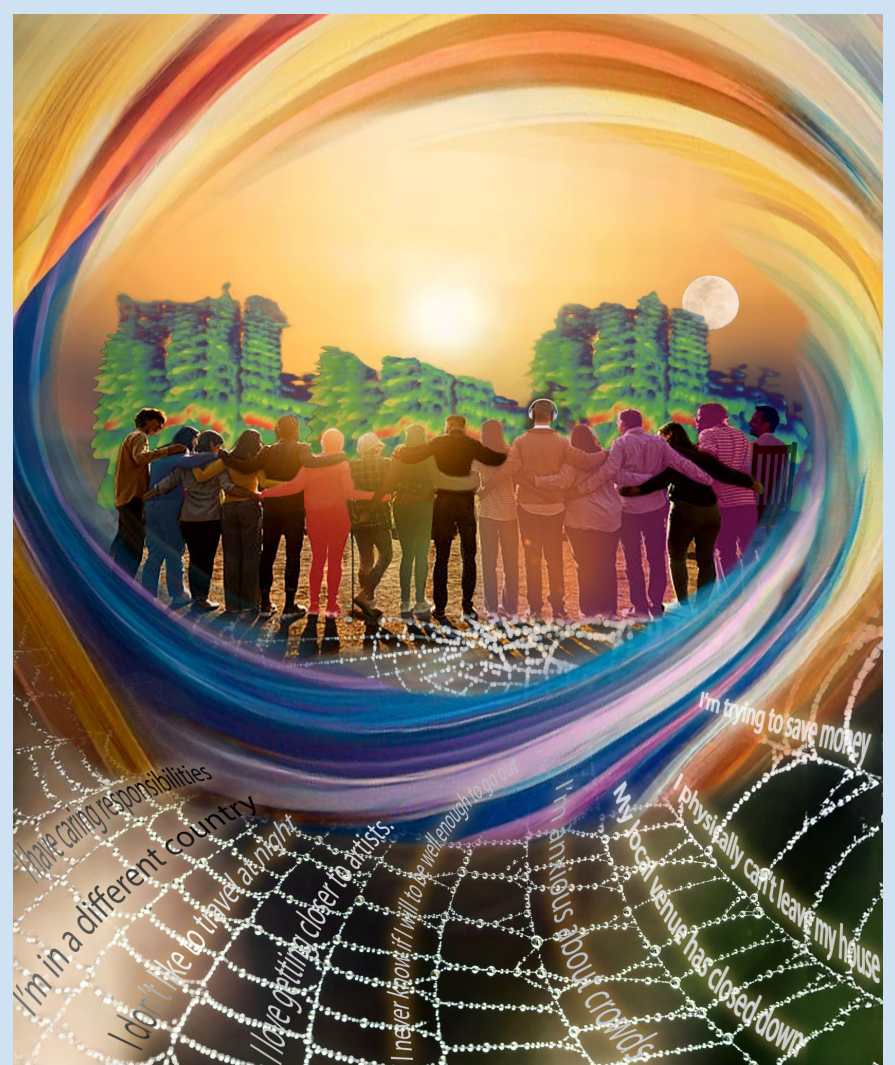


## Visual Story - Warmth

The **SUN** is warm, inviting, bright, active and celebratory. Reminiscent of the shared excitement when the sun comes out and draws people to it.

Warm **COLOURFUL SWIRL** – a soft hug that encapsulates the people. The web is outside of that, as it is the pathways into this experience.

The **people in the group** have variations in colour tint effects; some are the original colour of their surroundings, others are more glowing. This shows they are physically in different places and choosing to join this space together. They are brought together by this event, but also their togetherness creates this experience.



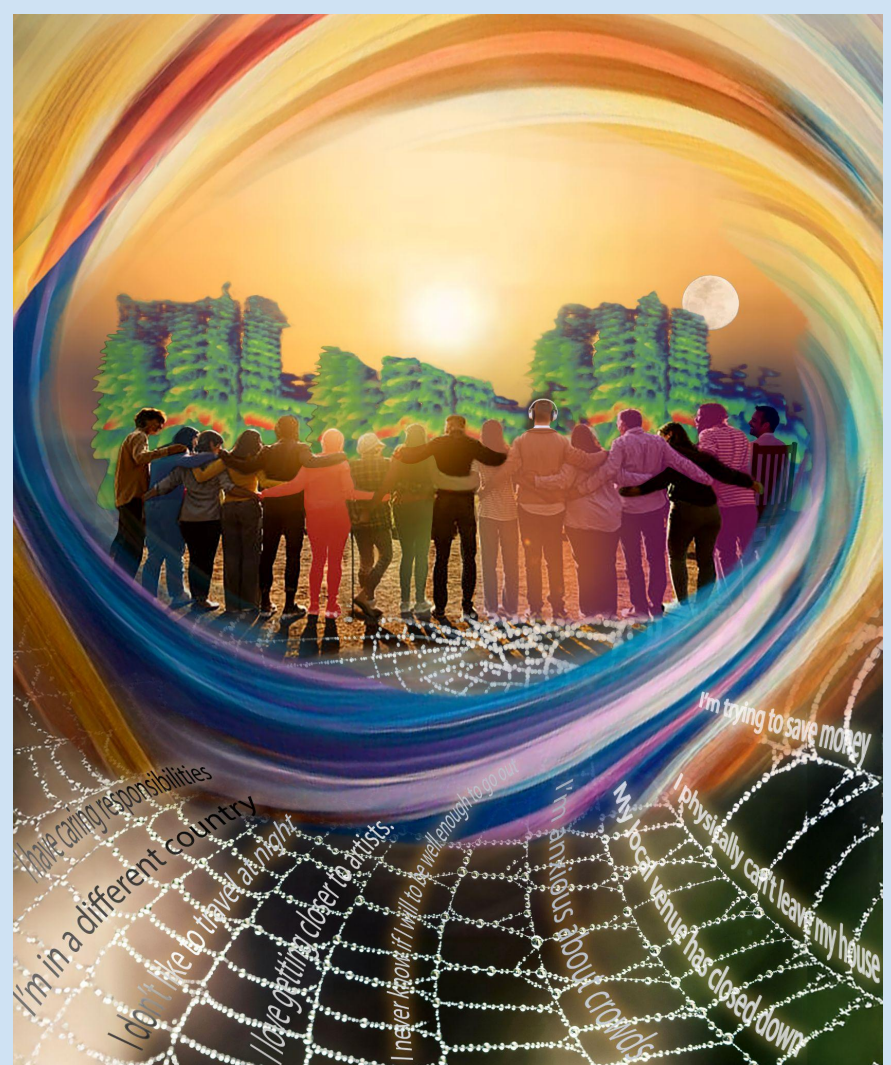
## Visual Story - Performers

The role of the Performer is represented by the **soundwave** element. Created from a spectrogram of the group's own voices, it symbolises the music and energy that the performer brings to the event.

The soundwave is integrated into the background, sometimes blending with the sun or the space around the people, highlighting how the performer and their music are central to the shared experience.

Rather than focusing attention solely on the performer, the image uses the soundwave to show how the team supports the performer. It also shows how the performer's presence and artistry help create the atmosphere of togetherness, excitement and anticipation that unites everyone in the scene.

**Feeling supported is psychological safety, at its heart.** Supported performers have obstacles removed so they can connect with themselves and their audience - it's a feeling of serenity.



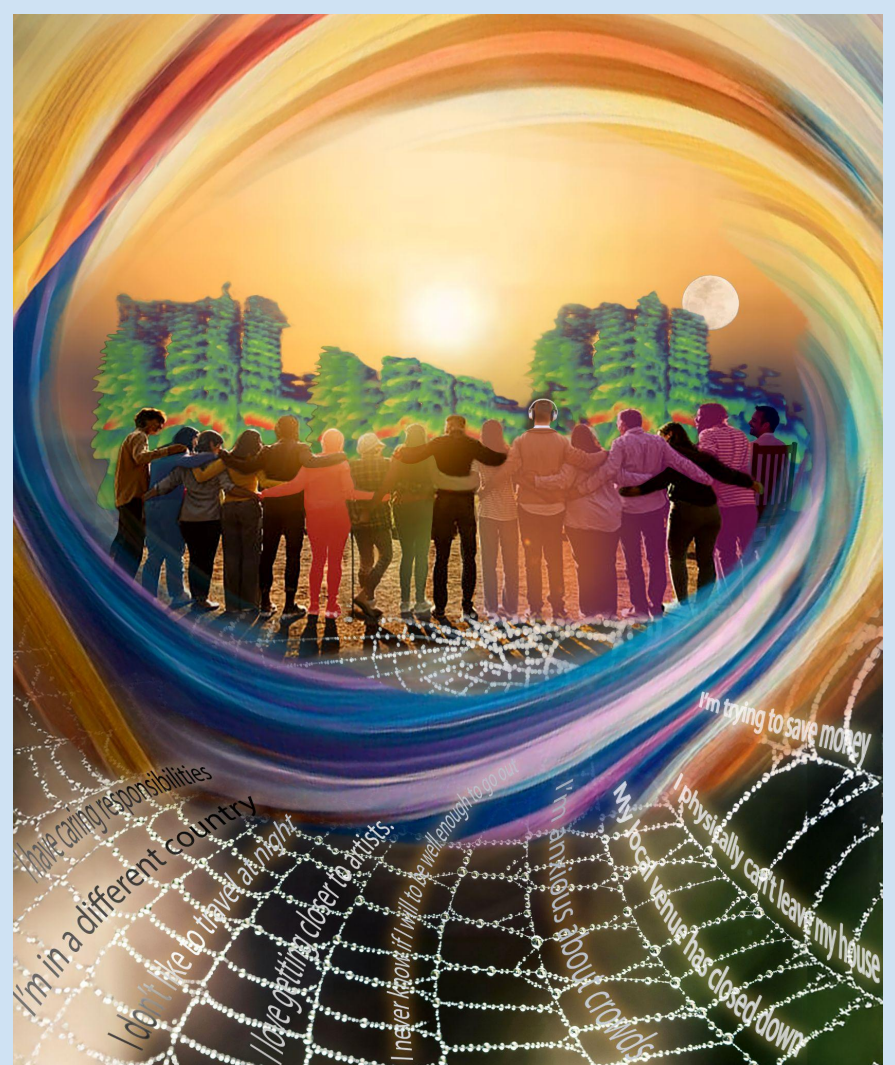


## Visual Story - Communal

The **MOON** is peeking out behind the shape of our voices.

The Moon is inclusive and communal. It can be seen across the world – you see it alone, yet people on the other side of the planet see it too. **A good moon is an event without borders**; it floods our social media.

A **daytime moon** has an exciting *“I’m not supposed to be here”* feeling. During the day, the moon is not really for us; it exists for those on the other side of the world, yet we can still access it.



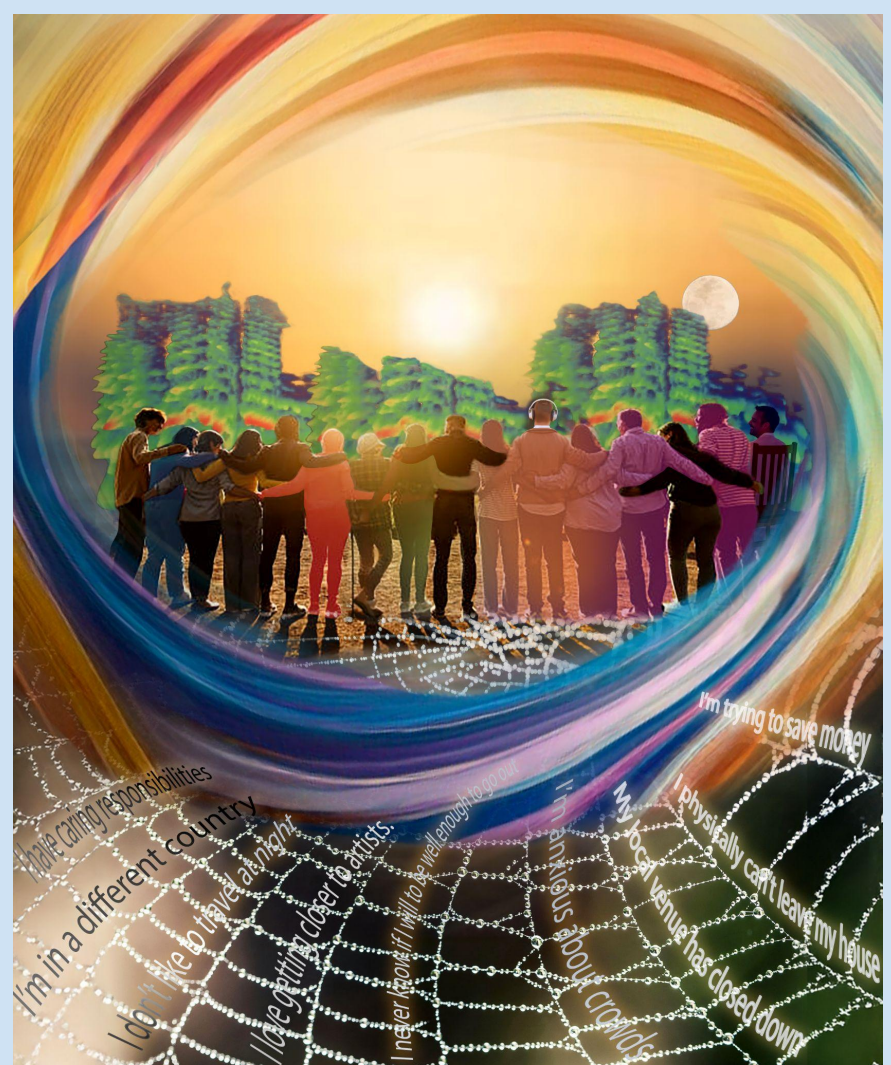
# Visual Story - Grounded in Accessible Routes

LTYLR works to remove barriers to include people with diverse access needs. We see **different visible access requirements** (stick, headphones, sitting person) within the group.

The **WEB** in the image symbolises the many different paths and experiences that form the roots of the community, as well as the routes that lead individuals into the image. It reflects the strength and organic growth of the group, highlighting how connections form naturally and inclusively.

*'A web is an expansive thing, it starts from nothing and grows, gathering and bringing people along.'*

The **web (and shadows below the people)** also represents the diverse routes, barriers and journeys individuals have taken into this image, reflecting their different reasons for engaging in LTYLR.



## Visual Story - *We made this place together*

### **Accessibility is at the heart of our mission.**

People have different needs, routes and unique barriers which is something we have deep roots in from our beginning. We have grown from that core.

Each thread in the web has individual's stories superimposed:

- 'I'm in a different country'*
- 'I love getting closer to artists'*
- 'I physically can't leave my house'*
- 'I'm anxious about crowds'*
- 'I never know if I'm going to be well enough to go out'*
- 'I have caring responsibilities'*
- 'I don't like to travel at night'*
- 'I'm trying to save money'*
- 'My local venue has closed down'*

They all lead to the **the warm colourful place that WE CREATE TOGETHER** when we all arrive.

